

The Gardeners Voice

The GCFM Quarterly Newsletter

Member Of National Garden Clubs, Inc. &

The New England Region

April 2011, Volume 59, Number 171 www.mainegardenclubs.org



In this Issue

In this Issue:

- Pg. 3: GCFM President's Notes & President's Outreach Support Choice
Pg. 7: Civic Development Grants
Pg. 8: Native, Invasive & Endangered Plants; Garden Zone Information
Pg. 10: ECO DAY at Laudholm Farm
Pg. 12: Digging Deeper
Pg. 13: GCFM Events & Calendar
Pg. 15: Membership Hints
Pg. 16: GCFM Scholarship News
Pg. 19: Visiting Gardens
Pg. 20: GCFM News including tours, history and GCFM Spotlight
Pg. 23: GCFM 2011 Convention

Cover Photo: Apple Tree Blossoms

Photo by: P A W Newcomb ~ Newport, Maine

The New Electronic Gardeners Voice

Article submissions & advertising requests to :

Editor: Pam Newcomb, 17 High Street, Newport, ME 04953
newsletter@mainegardenclubs.org, 207-368-2560
Editor reserves the right to cut or change for brevity or clarity.
Articles and photos should be emailed.

Newsletter Deadlines: November 15th for January issue, March 1st for April issue,
June 1st for July issue, September 1st for October issue.

Newsletter Electronic: to receive sign up on our website

Advertising Rates: Prepaid ad rates for one issue (in inches), all full color:

4.5 x 7.5 (new back cover size)	\$200.00
4 x 4 (cover only)	\$135.00
4.5 x 7.5	\$ 90.00
4.5 x 3.4	\$ 75.00
3 x 4	\$ 50.00
2.25 x 3.25	\$ 35.00
2.25 x 2.25	\$ 25.00

10% discount for a prepaid, 4 issue (1 yr) ad Payment due at time of order

Current Circulation: 3000

GCFM President's Message

Spring Issue 2011

Welcome to "Spring" in Maine. After this past winter of deep snow, cold nights and our endless arm chair inspirations for this year's thawed ground, what is at the top of your priority list? New gardening publications are on many shelves, the horticulture websites are arriving twenty-four-seven into our mailboxes, testimonies of the newest cultivars have been posted and our gardening shoes are ready to walk the talk. The Flower Shows in New England this year experienced avid attendees and if you did not take the time to attend, you should put that at the top of your list for next winter. The shows that I was able to visit were worthy of our time. We are always appreciative of all of the hours, energy, thought, sponsorships and talents given to create pre-season gardening for the enthusiast of all ages.



*Rebecca L. Linney ~ GCFM President
2009-2011*

Many of your GCFM chairmen and volunteers have been very busy this past winter on your behalf. Please give them the support and gratitude that they deserve. The club projects, programs, and local community participation, all continue to blossom and nurture our local passions for gardening. During this past term, several GCFM concerns that merited dedicated hours of research, documentation and suggestions for consideration were tackled by a nucleus of caring and qualified people. It has been an honor to work with our devoted membership from across the state, in order to accomplish these potential solutions.

In October, you were presented with the 2011-2013 slate of officers to serve you during the next term. When and if you are asked to serve on the GCFM Board of Directors, please give it consideration. Also, as the local clubs and districts begin to plan for the next two years, again, being a part of a team has its rewards. When leadership is met with collaboration, communication and supportive responses, the management of an organization and saying 'YES' has an encouraging ring that can be contagious.

You have all worked endlessly to promote the love of gardening, preserving our

PRESIDENT'S MESSAGE CONTINUED

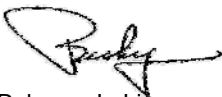
history, being advocates of a safer environment, encouraging Maine to grow locally, included the youth in your neighborhood and remembered that scholarship is the most sustaining effort we can offer to our next generation. Your design talents have graced local libraries, galleries, places of worship, public affairs, flower shows, homes of family and friends upon many occasions. As individuals many of you have worked with community services/affairs that often go unnoticed. Where would any cause worthy of attention be without the countless hours of our volunteers? Gardeners are the most generous people that you will ever want to know.

April in Maine will be initiated with our last GCFM Collaborative effort with another organization for sharing educational opportunities. 'ECHODAY,' with the Wellsreserve at Laudholm Farm, happens on April 16, 2011 from 10 to 3. This is a free, family, friendly affair. Please come to celebrate 'Earth Day – Healthy Planet, Healthy You.' GCFM is sponsoring the keynote speaker, Dr. John Carroll who will speak about "New England's Capability to Feed Itself". Spring will also bring forward all of the GCFM District Annual Meetings in April and May.

Don't forget to put WAFA, the World Association of Flower Arrangers USA, www.wafausa.org, being held in Boston June 15-19, 2011, on your calendars. For the first time, WAFA USA will welcome floral designers from around the world to the United States for the 10th World Flower Show. This is an Olympiad of flower arranging. Join this experience of the 'world through flowers.' In Maine, Plant Sales, Farmers Markets and Garden Tours will soon be beckoning a call for awareness and participation. Remember to include a child in your summer gardening travels.

During the past two years, I have had the pleasure of traveling throughout the New England Region to visit with fellow State Presidents and shall be in both Rhode Island and Massachusetts between now and June. Towards the end of May, a few of us will be leaving for the Annual NGC Convention in Washington, DC. When we return, it will be time to focus on our 80th GCFM Annual Convention in Castine, "Downeast -- Honoring our Past, Sustaining Our Future", June 21-23rd. Alvion and Cindi Kimball have been working with their committee planning a memorable time for all of us. I look forward to welcoming all of you in Castine.

At this time I wish to thank each and every one of you for giving me this opportunity to serve the Garden Club Federation of Maine, as president. It has been an honor to work with all of you, the friendships will be a lifelong treasure to me and "Making A Difference" could not have happened without YOU.



Rebecca L. Linney
GCFM President 2009-2011

GCFM PRESIDENT'S OUTREACH SUPPORT CHOICE 2010-2011

Submitted By Rebecca Linney ~ GCFM President 2009-2011

Lyle Littlefield was born in Monroe, ME, May 13, 1921. He completed his secondary schooling by 1938 and entered the University of Maine, at the age of 20, in 1941. He received a BS in Horticulture in 1945. From July 1945 to Sept. 1947, he was a private gardener for the Hyde Estate in Bath, ME. Starting in February of 1947 Lyle began his lifelong, distinguished career committed to 'Horticulture in the state of Maine' on the University of Maine campus. In 1952, he received a degree of Master of Science in Horticulture upon the completion of his thesis "**The Woody Plants on the University of Maine Campus**". He became a member of the American Society for Horticulture Science. He was also a member of the Maine State Florist Association and the Maine Nurserymen's Association. Lyle lectured for each of the Extension Service offices across the state. He completed a gardening series for public television which aired in Maine and other states. Lyle Littlefield retired from the University as an Associate Professor of Ornamental Horticulture in June 1986.

During his career, Professor Littlefield worked closely with not only his students, but also the commercial industry and the general public, thus becoming aware of the misinformation and lack of documentation happening with Horticulture in the state of Maine. The focus of Professor Littlefield's thesis was to document every woody plant found on the campus with not only proper identification, but he also included 61 individual planting plans. These plans showed relative locations of the majority of the plants so that they could be studied year round for seasonal characteristics. Identification is always a challenge as he was aware of the potential misinformation, mislabeling and substitutions occurring in the landscapes of Maine by both commercial and private individuals. Documentation of mature stages of plant material was also a mystery to the future landscapes of Maine. Professor Littlefield was eager to help an untrained person to be able to identify plant material.

The '***Littlefield Garden Nursery***', the five acre ornamental garden and test plot, on the campus of the University of Maine was created by Professor Littlefield in 1960 for evaluations of horticultural material under the supervision of the Horticulture Department, as well as student and public observations. For each of the specimen plants set out in the test plot, Lyle would run ongoing hardiness trials. His early passions were evident within the many "woody plants" he included in the original collections of the "*Nursery*", such as over a hundred *Malus* (Flowering Crabapple) species and cultivars. The nursery has since been utilized to evaluate turf studies, blueberry research, *Ilex glabra* (native inkberry) as well as assessing many other native woody plants, small tree trials and plant propagation. In 1990, the '***Littlefield Garden Nursery***' was renamed to "**The Lyle E. Littlefield Ornamentals Trial Garden and Research Center.**"

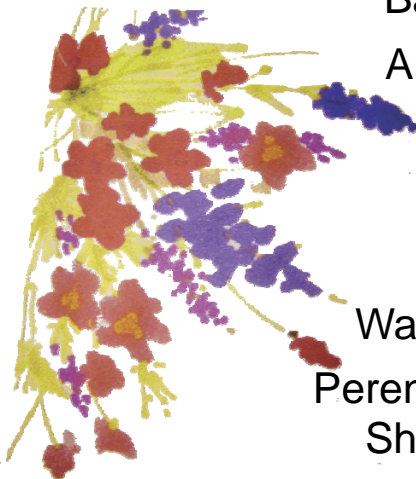
Most of the work with woody plants involves evaluations over a number of years rather than a single growing season. The existing space has become crowded at times and the nursery can become quickly filled to capacity with a single addition of a selected study. This Horticulture Research Center at the University of Maine is also

GCFM PRESIDENT'S OUTREACH SUPPORT CONTINUED

important to the horticulture program, the PSE (Plant, Soil and Environmental) department and for the USDA Plant Hardiness Zone Map documented and updated with the United States National Arboretum. Back in the 1980's Lyle published the results of his work in a 25-page CES bulletin called "Woody Ornamental Plant Hardiness Trials." It became a bible for conscientious home landscapers, as well as nursery and garden centers looking for hardy plants that would survive in Maine.

Lyle E. Littlefield passed away June 9, 1988. **The Lyle E. Littlefield Ornamentals Trial Garden and Research Center** is continuing the original mission created by Professor Littlefield. Today, there is awareness that an expansion of the nursery acreage is necessary to accommodate a broader field of study on a larger scale and also, to accommodate additional nursery classes. Expansion of the "Nursery" facilities compliments efforts underway for the support of Landscape Horticulture initiatives and to support the outreach work being coordinated within the **University of Maine Environmental Horticulture Program**.

Every year the GCFM President has the privilege of designating where the sum of \$300 will be donated in Maine. This year my choice is the **"The Lyle E Littlefield Ornamentals Trial Garden and Research Center"** on the campus of the University of Maine in Orono. It is my pleasure to offer support from the Garden Club Federation of Maine to the Legacy of Lyle E. Littlefield.



Bath Garden Club

Annual Plant Sale

May 14, 2011

8 am – noon

Library Park

Washington St., Bath

Perennials, Herbs, Native
Shrubs, Geraniums,
more...

Prices starting at \$3.00

CIVIC DEVELOPMENT GRANTS

Submitted By Wendy Cote ~ GCFM Civic Development Chairman

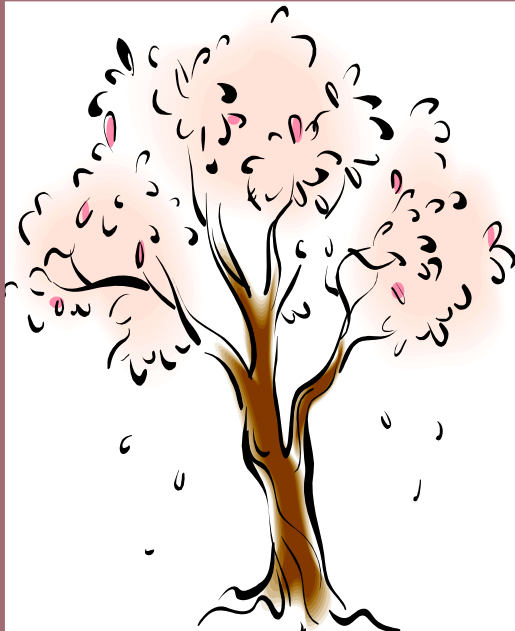


Applications were sent out to the 24 clubs who participated in the GCFM Daffodil Fund Raiser over the last two years. These 24 clubs are eligible to apply for grant money that will be awarded at the GCFM Convention Banquet in Castine (June 2011). The grant money can be used by a club to help fund a civic development project in their community that will influence a child or children. **The deadline for return submission is May 1, 2011.**

GCFM Awards

Many hands have worked hard to make the awards available electronically for your convenience.

Award applications and information will be posted on the website in April 2011.



Facebook is a social networking website — a gathering spot, to connect with your friends. Facebook allows you to make new connections with people who share a common interest, expanding your personal network.

Join Garden Club Federation of Maine on our Facebook page and share your ideas, questions, interests, tips and friendship.

facebook®

NATIVE, INVASIVE & ENDANGERED PLANTS

Submitted By Carol J. Smith ~ GCFM Native Plant, Invasive Plant & Endangered Species Chairman

The best part of belonging to a garden club is sharing information with other gardeners. I personally enjoy visiting gardens and hearing the gardener's experiences with each plant or pest.

When it comes to native plants and invasive plants, I am certainly not an expert. But I have done quite a bit of research on both subjects. I share what I learn with articles in our GCFM Newsletter, on the website and with displays and handouts at the spring conventions and fall conferences. At the June convention in Castine, I will be holding a Breakfast Focus Group on native and invasive plants on Wednesday June 22 at 7:30 a.m. Space is limited, so register early and check the appropriate box on your Registration Form. I look forward to our sharing of information.



REMEMBER CORN GLUTEN?

Submitted By Karen Curtis ~ GCFM Horticulture Zone Chairman

Last year I used corn gluten to control weeds that I have not been able to eradicate from my perennial and kitchen garden beds. I have pulled, mulched, and applied my husband's blowtorch. The weeds have always returned.

I read that corn gluten keeps seeds from developing roots. Well developed plants are not bothered because they already have roots. I weeded again, roughed up the soil, and sprinkled the corn gluten on the bare soil, much as one sprinkles pepper on mashed potatoes.

The weeds did not grow; the gluten-sprinkled ground stayed bare. Corn gluten works. I do have two caveats: use the amount recommended on the bag (I probably used more than the recommended amount.). If you want to transplant into the bed use plants that are well developed and vigorous. Seedlings that I transplanted into gluten-sprinkled soil did not do well.

VEGETABLES FOR SHADE

Submitted By Karen Curtis ~ GCFM Horticulture Zone Chairman

In the last two or three years there has been a heightened interest in kitchen gardens and producing fresh and delicious vegetables. Articles have featured adding vegetables to flower beds, creating very small vegetable gardens, growing plants up on poles or trellises to increase productivity in a small space, and experimenting with dwarf varieties. Six hours of full sun is a requirement.

Recently I talked with a kitchen gardener who does not have the magical six hours. He was apologetic and down played his results because, "I have mostly shade." In fact, some wonderful vegetables prefer partial shade or dappled sunlight. Think of greens. I grow a modest variety of lettuces, spinach, mache, tatsoi, arugula, and rapa. By mid-summer all of my greens need to be in partial shade to protect them from the heat which causes early bolting. When I plant cabbage, Brussel sprouts, and broccoli in mid-July for a fall harvest I keep the plants semi-shaded and cooler either by planting in dappled shade or creating shade with screening.

I do love the vegetables that need more sun, but I think that growing vegetables in partial shade needs no apology. Any garden, in sun or shade, is something to celebrate.

MAINE HARVEST FOR HUNGER

Launched in 2000 as a volunteer opportunity for University of Maine Cooperative Extension Master Gardener Volunteers, the program is now active in 15 counties. Some counties focus on gleaning commercial fields, some Master Gardener groups grow and donate entire garden harvests toward the hunger effort, while others recruit backyard gardeners from around the area to participate.

The Maine Harvest for Hunger program is open to all interested gardeners and is coordinated through University of Maine Cooperative Extension Master Gardener Volunteer program.

Why Maine Harvest for Hunger is so important

- 10% of Maine households, representing 141,000 people, are "food insecure" according to the USDA.
- More than 40% of Maine children under the age of 12 show some evidence of hunger.
- 19,325 Maine children are hungry.
- Maine ranks 5th in the nation in prevalence of food insecurity.

For more information contact University of Maine Cooperative Extension

<http://extension.umaine.edu/harvest-for-hunger/>



wellsreserve

ECODAY

healthy planet • healthy you

SPONSORED BY

GOODALL

HealthCenter

April 16 10 to 3
Saturday

family friendly & free!
(donations gratefully accepted)

Featuring...

Green Expo & Wellness Fair
Holistic Fitness & Outdoor Recreation
Environmental Organizations
Laudholm 5K, Volleyball Tourney
Nature Walks, Beach Cleanup
Farmer's Market, Food, Music, Fun
Keynote: Dr. John Carroll

Sponsored by the Garden Club Federation of Maine



wellsreserve
at laudholm

207-646-1555 • wellsreserve.org

Additional Sponsors — Quest Fitness • Sperry Tent • Kittery Trading Post
Atlantic Housewrights • Nonantum Resort • Warner Design Associates

GCFM SPONSORS KEYNOTE AT ECO DAY
‘ECO DAY’
“Healthy Planet-Healthy You”

Laudholm Farm, Wells, ME

April 16, 2011

10 AM – 3 PM

In honor of **EARTH DAY**

The day will be filled with speakers, activities, and vendors. GCFM will be the sponsor of the keynote speaker: John E. Carroll, Professor of Environmental Conservation at the University of New Hampshire. Author and editor of *The Wisdom of Small Farms and Local Food, Sustainability* ANNOUNCING the Publication of *PASTURES OF PLENTY: THE AGRICULTURE AND ENVIRONMENTAL CONSERVATION IN NEW ENGLAND*.

Wells Reserve EcoDay encourages everyone to get active, be fit, and go green for a healthy planet and a healthy you. On April 16 from 10 am to 3 pm visit the Wells Reserve at Laudholm to try out paddle surfing, kayaking, yoga, zumba, and other activities. Check out the green expo and wellness fair, visit with conservation organizations, and hear talks on hot environmental topics.

In the EcoDay keynote, Dr. John E. Carroll, professor of natural resources at the University of New Hampshire, will address food sustainability for New England. What is the future of local food? Is Maine on your dinner plate? Do you know your farmer? Dr. Carroll's EcoDay presentation is sponsored by the Garden Club Federation of Maine.

Dr. Carroll studies New England's capability of feeding itself. His research is focused on increasing the quantity of fruits, vegetables, meats, dairy, and grain that are produced for local consumption, and improving the infrastructure needed to accomplish that goal. Carroll received his Ph.D. in resource development from Michigan State University in 1974 and holds geography degrees from Western Michigan University and Louisiana Tech University. His books include *Sustainability and Spirituality* and *Pastures of Plenty: The Future of Food, Agriculture and Environmental Conservation in New England*.

For further information www.wellsreserve.org



Dr. John E Carroll

DIGGING DEEPER



Digging Deeper is for you - Do you have a burning question you would like to know more about? Looking for an answer for that gardening problem? Want to know more about a garden club procedure? Do you have a concern you would like addressed? Many of us have the same questions or concerns. Why not ask? Submit your questions, comments or concerns to the Editor at: newsletter@mainegardenclubs.org.

Question: Where can I ask questions about gardening problems and get responses from everyone with more information?

Response by Pam Newcomb GCFM Web Master This is an excellent question. Garden Club Federation of Maine has a Facebook page that is perfect for sharing information with fellow gardeners. Simply log on and ask your question, and others will add comments with tips, successes, failures and tried and true remedies.

Question: Where do I find contacts for GCFM Chairman? How do I access the members only pages of the website?

Response by Pam Newcomb GCFM Webmaster. Our website has a contacts tab on the top navigation bar, when you click on this it will provide a list of contacts. If you don't find what your looking for simply email the webmaster.

http://mainegardenclubs.org/Contact_Us.html. To access the members only section of the website contact your club president, they should have the password.



**Sign up for your Electronic
Copy of the Newsletter today.**

At

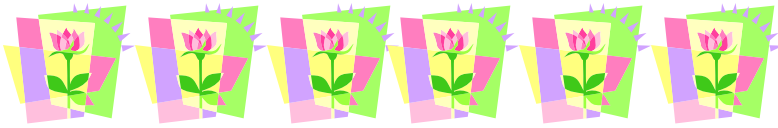
www.mainegardenclubs.org

On the Newsletter Tab

Don't miss any news!

Sign up today!

Dates to Remember



2011

- April 4 GCFM Board Meeting, Manchester, Maine
- April 7-9 Gardening Study School Course Two, MA
- April 8-10 Art in Bloom, Bangor Garden Show, Bangor, Maine
FMI: contact Carol Smith Luvs2Garden2@aol.com
- April 16 ECO DAY, Healthy Planet-Healthy You, 10am-3pm
Laudholm Farm, Wells, Maine FMI: see article in this publication
- April 26-28 Flower Show School Course Two, Taunton, MA
- April 27 Stroudwater District Meeting
- April 28 Piscataqua District Meeting
- April 29– May 2 MFA Art in Bloom, Museum of Fine Arts, Boston
- May 2 Medomak District Meeting
- May 5 Penobscot District Meeting
- May 7 Wiscasset Garden Club, Plant Sale, 9am-noon
Wiscasset Municipal Building, FMI: prishansen@roadrunner.com
- May 10 Veazie Annual Plant Auction, Veazie Community School
7pm FMI: gaafam@aol.com
- May 14 Bath Garden Club Annual Plant Sale, 8am-noon, Library Park
Washington St, Bath, Maine FMI: see add in this publication
- May 14 & 21 Spring Bulb Tour, W.P. Stewart Estate, Mount Desert Island
FMI: see add in this publication
- May 17 Kennebec District Meeting, Wilton, Maine
- May 27-30 NGC Annual Convention, Washington DC
- May 28 Sebasticook Garden Club Annual Plant Sale, 9am
Bud's in Newport, Maine FMI: sebasticookgardenclub@gmail.com

Dates to Remember



- June 15-19 WAFA, Seaport World Trade Center, Boston
- June 16 World Association of Flower Arrangers Garden Trip, Boston
FMI: Carol Arnold, 990-5949 or by email: gaafam@aol.com
- June 21-23 GCFM Annual Convention, MMA, Castine , Maine
- June 24-26 Newport RI Flower Show
FMI: www.newportmansions.org/page4702.cfm
- July International Trip: Rhine River Cruise with Michaeleen Ward
GCFM Visiting Garden Chairman FMI: 207-669-8241 or
m_michaeleen@yahoo.com
- July 8 Waldo County General Hospital Aid's 21st Garden Walk
FMI: see ad in this publication
- July 15 Kingsbrae Garden Tour, St Andrews, New Brunswick
FMI: Carol Arnold, 990-5949 or by email: gaafam@aol.com
- September 13-15 Flower Show School Course III, MA
- September 20-25 NGC 2011 Fall Board Meeting, St Louis, Missouri
- October 26 GCFM Fall Conference NOTE CORRECTED DATE
- October 17-18 New England Region Meeting, Chelmsford, MA
- October 18-20 New England Regional Symposium, Chelmsford, MA

2012

- May 16-19 NGC Convention 2012, Buffalo, New York
- September 25-29 NGC 2012 Fall Board Meeting, Little Rock, Arkansas

2013

- May 24-26 NGC 2013 Convention, Seattle, Washington
- September Flower Show School Course IV, MA TBA

LEAP INTO SPRING RECRUITING NEW MEMBERS

Submitted by Janet Gourley ~ GCFM Membership Chairman

By the time you read this article spring will have arrived. Snowdrops, winter aconite, crocuses and scilla will have cheered us on with their delightful blooms and flowering tulips and daffodils will be just around the corner. What a perfect time to be recruiting new members!

As I drive around, everywhere it seems, I see more homes with gardens than ever before. In fact, I understand gardening is America's most popular hobby. Certainly, many of these gardeners would be interested in having more horticultural information and hints and sharing successes and failures with others. Of course, since many of these people work outside the home, they can't get to meetings.

Here are a few suggestions to accommodate these individuals. If your meetings are around the lunch hour, some workers would be able to attend. Through your publicity make it known they are welcome. Since many offices offer flexible hours, clubs with morning or afternoon meetings could invite future members to make the meeting their lunch hour and bring a brown bag lunch. Another idea could be to establish a sectional committee to form subgroups. How about 5:30 on the way home from work in members' homes for wine and cheese? Or Saturday groups to meet in town halls, libraries, churches, malls etc. Perhaps, the group could provide gardening services in lieu of a fee.

The possibilities are endless so let's leap into spring recruiting new members.

**Art
in Bloom**

Bangor Garden Show
April 8-10, 2011
Friday & Saturday 9am-8pm
Sunday 10am-4pm

Presented by:
**Penobscot District &
Valley Arts Alliance**

THE ROSEMARY CIRCLE

Submitted by Mary Blackstone ~ GCFM Scholarship Chairman

Get to Know Our GCFM Scholarship Winners--Come to the Scholarship Dinner!

Once again the Scholarship Committee has been busy reviewing applications from university students for the Garden Club Federation of Maine Horticulture Scholarship. It seems that every year the decision is more and more painful because there seem to be more deserving students and only one very modest \$3300 scholarship to offer. We are of course hopeful that again this year the GCFM Scholarship winner will also be able to compete successfully for another National Garden Clubs Scholarship. However, with projected costs for just one year of university education running to as much as \$30,000-\$40,000/year, we are especially aware of how much money we still have to raise at the state level to position our scholarship endowment so that it can provide more substantial support for those students who are the future of horticulture, landscape design, sustainable agriculture and the environment in our state.



In the mean time, though, we need to celebrate those students that we have been able to support and what they have already contributed in areas of interest to the GCFM--as well as those GCFM members whose support for the Scholarship Fund has made the scholarship possible. Please join me for the annual Scholarship Dinner which will kick off the GCFM Spring Convention in Castine on June 21. If you haven't already registered for the Convention and the Dinner please do so now so that you can be treated to an update by our 2010 Scholarship winner Luka Negoita, who will be talking about his senior research project at the College of the Atlantic which enabled him to complete a summer-long survey of the plants on Little Duck Island (near Mt. Desert Island) and the special habitat it provides for sea birds. For a sneak preview check out Luka's blog at <http://lukabotanical.blogspot.com>. Of course, you will also be the first to know who our 2011 scholarship winner will be, and I am hopeful that winner will be able to join us for the dinner and be personally introduced to all the life members and club representatives who have been responsible for building our Scholarship Fund this past year and in years past.

Finally, as we move into our long awaited spring and some clubs look ways to honor retiring officers and other club members who have contributed much to their club and community, please consider recognizing those individuals with a GCFM Life Membership--and encouraging them to attend the annual Scholarship Dinner. Donors to the GCFM Horticulture Scholarship Fund from June 2010-May 2011

THE EVERLASTING CIRCLE

OUR NEWEST MEMBERS OF THE EVERLASTING CIRCLE
(donors to the Scholarship Fund June 2010-May 2011)

GCFM Life Members

#546 Sally Cook of the Ellsworth Garden Club from Mary Blackstone and that club

Club and District Donations

Bangor Garden Club

Penobscot District in honor of Carol Smith

winner of the District's 2010 Award of Honor

Southern Maine Garden Club




Encourage graduates you know to apply for GCFM Educational Scholarships. Details can be found on the scholarship tab of our website at : www.maineclub.org

Keep our endowment growing become a GCFM Life Member and support our scholarship fund.

SCHOLARSHIP RECIPIENTS UPDATE WHERE ARE THEY NOW?

Some of you may remember David Merrill our 2008 and 2009 GCFM and NGC Scholarship winner who completed his degree Sustainable Agriculture at the University of Maine last spring. Although he tried very hard during his stay in Turkey last June, the effort to connect him with our Scholarship dinner last year through Skype did not work, but in case you are wondering if he ever got back to the US, read the following excerpt from the Thanksgiving letter he sent to update me on what he has been doing.

SCHOLARSHIP RECEIPIANTS UPDATE CONTINUED



A Spring Bulb Tour


W. P. Stewart Estate
Northeast Harbor,
Mount Desert Island

Open to the Public
2 Saturdays - May 14 & 21
9:30AM - 3:30PM

45,000 blooming bulbs!

Suggested donation \$10.00 - Under 12 free
On Somes Sound
32 Sargeant Drive, Northeast Harbor
Benefits MDI Community Sailing Center
Dates may change due to Mother Nature
Please contact us at
www.springbulbtour.org or 244 - 7905

Hybrids:
Tulip
Daffodil
Anemone
Hyacinth
Pushkinia
Leucojum
Viridiflora
Darwin

Sponsored by
Delivering on A promise.
 Deal River
Company

Hi Mary!

After spending my final semester in Turkey, i took a backpack and hit the road for five weeks, beginning in northern Iraq (the autonomous region of Kurdistan) and - sleeping on couches, in cheap hotels, and one night sharing the lawn outside a monastery with two Swiss motorcyclists - wound my way through eastern Turkey to Georgia and the Black Sea coast. Then, with stories and images aplenty, i headed home to resume my work as outreach videographer on several sustainable agriculture grant projects with UMaine researchers (you can find this work at www.youtube.com/

[zeroseedrain](http://www.youtube.com/zeroseedrain) and www.youtube.com/localbreadwheat as clips are posted). On the job, i spent a week in Denmark, visiting organic farms and grain mills with a group of researchers, farmers, and millers to learn about the Danish bread wheat system. I write at the moment from a coffeehouse in Flagstaff, Arizona, where i'm visiting friends for the Thanksgiving holiday. Counting my blessings - among them, that this year has been a fantastic opportunity to hear different languages, to see a diversity of flora from the humid subtropic Black Sea coast to the Ponderosa Pine forests of northern Arizona. I continue to reside in Maine, though i'm hoping to travel India and Southeast Asia in 2011, and continue to publish images and reflections along the way at www.ramblingwejak.blogspot.com (though between work and traveling so much it can be tough to keep the blog up to date!)

Many thanks! David

VISITING GARDENS

Submitted by Michaeleen Ward – GCFM Visiting Gardens Chairman

With Spring and Summer on the horizon, thoughts begin to turn to “visiting gardens”. Be sure to check the GCFM website for Visiting Gardens, as you make plans to see Maine’s beauty of Spring bulbs, flowering trees, and wonderful gardens open to the public during this spring and summer. The list of gardens will be updated on a continual basis, as information comes in from our garden club members.

A spectacular annual Spring Bulb Tour is held at the W.P. Stewart estate in Northeast Harbor in May. Details are posted on the website. The plantings are reminiscent of the Keukenhof Garden in springtime in Holland, on a smaller scale, of course, but nevertheless, breathtaking!

Summer will bring many exciting garden tours to enjoy. Among club garden tours being presented this summer is the Bar Harbor Garden Club’s tour “Island Gardens”, held on Sun., July 17. (For details see “barharborgardenclub.org”.) The Bucksport Garden Club will host “Bucksport Abloom”, a day of special gardening events, on July 9. On July 24, the Southwest Harbor Library will have their garden tour on Mt. Desert Island. These, and other garden tours and events, will be listed on the Visiting Gardens website.

This year marks the 50th anniversary of the Wild Gardens of Acadia, in Acadia National Park on Mt. Desert Island. A commemorative Tea at the Wild Gardens is being planned for this summer – details will be posted on the Visiting Gardens website.

The German national Flower Show is being held this summer in Koblenz, a charming town along the Rhine. There is a beautiful Rhine River cruise, going from Switzerland to Amsterdam, which has included the flower show in its itinerary. If anyone might be interested, contact Michaeleen Ward, Visiting Gardens Chrm. - 207-669-8241 or visitinggardens@mainegardenclubs.org. GCFM members have already signed on for the cruise – join your fellow gardeners for a wonderful trip!

**Waldo County General
Hospital Aid’s
21st GARDEN WALK**

**Friday, JULY 8
10 a.m. - 6 p.m.**



**A one-day tour
of seven private gardens
in the Belfast area.
Rain or shine.**

**Tickets at the hospital.
\$15 each with map.**

**Info: call 930-6739 or
338-2785 or e-mail:
sgordon@wcgh.org**

JOIN THE VEAZIE GARDEN CLUB FOR TWO GARDEN-INSPIRED BUS TRIPS

The Veazie Garden Club will once again offer garden-inspired bus tours in 2011. Two interesting destinations will have something for all garden enthusiasts. Dates will be finalized shortly. To receive a brochure that outlines details as soon as they become available, please contact Carol Arnold, Veazie Garden Club President by calling 990-5949 or by email: gaafam@aol.com **Space is limited.**

Trip #1 June

The **World Association of Flower Arrangers (WAFA)**, an international organization that has roots in Britain will be holding its 10th World Flower Show in Boston. This tri-annual worldwide event makes its first-ever appearance on U.S. soil in Boston, Mass. at the Seaport World Trade Center, June 15-19, 2011. Competitors from around the world will be competing in 30 different floral design classes. In addition, demonstrations of diverse design techniques will abound. Opportunities to hear lectures from noted garden writers Daniel J. Hinkley, William Cullina and Douglas W. Tallamy will be available. Bus will depart Bangor and will also stop in Augusta to pick up passengers. For more information, see the WAFA web site: <http://www.wafausa.org>



Trip #2 July

Kingsbrae Garden, a mature horticultural garden in St. Andrews, New Brunswick has been a destination garden for years. In fact, it is one of Canada's Top Ten Public Gardens! It is a feast for the eyes with wonderful display and themed gardens. Old and new gardening styles are used throughout the garden. One can find a White Garden, a Rose Garden, a Knot Garden, and Cottage Gardens, to name but a few. Newer styles are reflected in their Gravel Garden, Secret Garden and Ornamental Grass Gardens. Participants will need a valid passport to go into Canada. For more information, see the Kingsbrae web site: <http://kingsbraegarden.com/>



Don't miss an opportunity to be inspired!

CAMDEN GARDEN CLUB BEGINS ARCHIVING HISTORIC RECORDS

Earlier this month the Camden Garden Club began the major undertaking of archiving its historic records. On March 4th ten club members met at the Camden Library History Center to receive instructions from archivist Heather Bilodeau on what to keep and how to organize and preserve the Garden Club's history. They continue to meet Friday afternoons and plan to finish the project well before the club's centennial celebration in 2015.



Many significant details have been found so far. Minutes from the organization of the club on March 4, 1915, at the home of Mrs. Dudley Talbot, 1 High Street, is of particular interest since Camden Garden Club was the first garden club in the state of Maine. Then on June 3, 1931, the Camden Garden Club hosted the chartering of the Garden Club Federation of Maine, Inc. at "Undercliffe" on Bayview Street which at that time was the home of Mrs. Ernest A. Robbins, president of the Camden Garden Club. She was elected as the first President of the Garden Club Federation of Maine, and Miss Bessie Bowers was elected treasurer. The founding Federation consisted of club representatives from Portland, Damariscotta, Belfast, Thomaston, Rockland and Camden, and its formation was inspired by a visit to Maine by Mrs. Frederic Kellogg of Morristown, NJ, who was president of the National Council of State Garden Club Federations.



In the process of inventorying the numerous boxes of records it is believed possible that there are materials in attics, closets, and basements. If anyone is aware of these "gems" please contact Judy M c G u i r k a t judith.mcguirk@myfairpoint.net, or items can be delivered to the library's History Center Tuesday-Saturday from 12-4 p.m.

GCFM WANTED LIST Information Requested

ATTENTION to all GCFM Students and Graduates of NGC Schools
Please submit all of your past and present records to Pam Newcomb,
newsletter@mainegardenclubs.org

GCFM is compiling a **Data Base** that will file all of our students and graduates of the National Garden Club Schools with their updated credentials for safe keeping. This will facilitate future connections for all NGC School communications electronically. Please submit all data to Pam, electronically, ASAP.

GCFM SPOTLIGHT

Submitted by Joan Drake and Judy Stallworth
Spotlight on Community Volunteer
Susan Gillies, Bath Garden Club

The Bath Garden Club hasn't been the same since Susan Gillies joined more than 12 years ago and began generating results: to wit,

Increasing revenues from the Club's Annual Plant Sale in May from under \$3,000 to over \$8,000. Her innovations?

Organizing members into digging and potting groups and labeling plants with Botanical names, common names, color, height, etc. Area gardeners now anticipate the Plant Sale, knowing they will be able to buy quality plants at a good price!

Increasing club membership as President from 2005-2007. Her new projects included Civic Beautification, Youth Activities, Scholarship donations, and Conservation efforts. She has also led the club in hyper-tufa workshops.

Increasing our connections with other groups. She has served on the GCFM Board as the National Life Membership chair. Her local connections include becoming a board member at Mid Coast Hospital and board president at Main Street Bath where she has been instrumental in organizing the successful, "So You Think You Know Bath" fund raising event.

Her activities have helped showcase Bath as a wonderful and vibrant community for living and visiting. A retired nurse, Susan has worked to develop an educational program for consumers on "How to Talk to Your Doctor." She has presented the program to local groups and on cable television.

Susan is passionate about the outdoors, becoming a habitat steward for the birds and sharing her passions with an extended family. She keeps mealworms in her refrigerator for the Blue Birds in her yard! In addition to planting and maintaining her beautiful garden, Susan is an accomplished knitter. She always keeps her hands busy. She is a model in the Halcyon yarn catalog and is seen modeling her own designs. Her artistic talents are endless!

Susan has a partner, Jim, in community volunteering. Besides offering his barn and workshop for Garden Club activities, Jim helps with projects that require equipment and moving things around. He tolerates Blue Bird food in the house and flower arrangers in his garage. He can be seen on his tractor all winter helping neighbors. He is a volunteer for the Bath Food Bank and the soup kitchen. Jim sits on Bath Public Service Commission and also chairs the community policing effort.

Jim and Susan Gillies are a couple that should be treasured by the greater Bath community.



CELEBRATE GARDENING IN CASTINE AND DOWN EAST MAINE

21-23 June 2011



The St Croix District of the GCFM invites you, your family and friends to join us for the annual spring convention as well as a vacation and gardening retreat in Castine, Maine, June 21-23, 2011.

We have garden tours, breakfast chats, lectures and hands on workshops to pique your gardening interests and introduce you to like minded gardeners and conservationists from throughout the state. You can be a day visitor, enjoy staying in luxurious Inns and B and B's or save money by rooming in the dorms of the Maine Maritime Academy. Registration is just \$30. The town of Castine provides a pristine pedestrian paradise with lovely gardens, local dining, coastal shops and elm trees lining the streets.

Castine is situated at the head of Penobscot Bay and the mouth of the Bagaduce River on the location of an ancient Native American Village and French trading post. Brooksville and Cape Rosier are just across the Bagaduce and the home of the Nearing Homestead/Good Life Center, Holbrook Island Sanctuary, beautifully landscaped perennial gardens, Elliot Coleman's Four Season Farm, practical greenhouse projects and many organic gardens. Deer Isle and Stonington are 35 minutes away and Acadia National Park is within an hours drive. Approaching Castine from the north or west through Belfast or Bangor, you'll have an opportunity to visit Fort Knox and the Penobscot Narrows Observatory. The fort was built to defend against British interference with the logging industry in the 1840's. The observatory is in the west pylon of the Penobscot Narrows Bridge and accessible through the fort. It is the world's tallest bridge observatory and offers a panoramic view of the forests and landscape at the head of Penobscot Bay from Camden to Blue Hill Mountain and Isle au Haut.

Castine is rich in history. First settled by the French in 1613, eight years before the Pilgrims landed at Plymouth, its home to the oldest continuously operated Post Office in the United States, the Wilson Museum, the Castine Historical Society and the Maine Maritime Academy. The Academy is one of just five maritime academies in the United States and the central location of our gardening convention. Travel on the Blue Star Memorial Highway to arrive in Castine or use it to extend your stay further DownEast to Roosevelt Campobello International Park or Kings Brae Gardens in St Andrews, N.B.

Make your reservation and download your activity and dining options from www.mainegardenclubs.org (Jan. newsletter). Please email ackimball1995@msn.com or call me or co-chair Cindi Kimball at 207-469-1144, if you have any questions about the Castine Gardening Convention.

Alvion Kimball

GCFM Convention Chair ~ Castine 2011

GCFM Spring Convention 2011

THE GARDEN CLUB FEDERATION OF MAINE SPRING CONVENTION 2011

“HONORING OUR PAST; SUSTAINING OUR FUTURE”

JUNE 21-23, 2011

Maine Maritime Academy ~ Castine, Maine

Tuesday, June 21, 2011

11:30am-5:00pm	Registration
1:00-5:00pm	Vendor Displays, Silent Auction and Raffle
12:00-4:00pm	Historic House and Garden Tour of Castine
1:00-3:30pm	Garden walk w/ photographer Lynn Karlin, Gardens Maine Style. Bring camera and questions. Sign up on registration form, Include garden tour, space limited.
3:30-5:00pm	Book signing w/ Maine photographer Lynn Karlin in Alford Center vendor area.
1:00-4:00pm	Flower and Garden Photographer's Workshop
6:00-9:30pm	Scholarship Dinner
6:00-6:30pm	Cocktails and Scholarship Raffle
6:30-7:45pm	Welcome and Introduction/Dinner
7:45-8:45pm	Program and announcement/introduction of 2011 GCFM Scholarship Winner

Wednesday, June 22, 2011

6:30-9:30am	Breakfast
	Self-guided walking tours of Historic Castine
7:30am	Breakfast Focus Groups
	Landscape Design - TBD
	Building Club/GCFM Membership-Janet Gourley
	Native/Invasive Species - Carol Smith
7:30am	Bird Walk in Witherle Woods w/Margot Haertel
8:00am-6:00pm	Registration at MMA in Harold Alford Hall
8:00am-9:00pm	Silent Auction and Raffle
8:30-9:30am	GCFM Board Meeting in Holmes Heritage Room
9:00am-5:00pm	Vendor Displays continued in Harold Alford Center
10:00am-11:00am	Keynote Speaker: Cindy Brockway
11:15am-12:15	Community SELF Reliance and the Greenhouse Project Tom Adamo and Tony Ferrara
12:15pm	Buffet Lunch or Box Lunch
12:30pm	Mini Tours Depart
	(A) Coleman/Damroche Gardens & Brooklin/Penobscot Greenhouses
	(B) Boat Tours of Penobscot Bay
	(C) Walking Tour of Witherle Woods with Ian Stewart of Maine Coast Heritage Trust
1:30-4:30pm	Ikebana Demonstration & Workshop Sandra Blake Leonard
2:30-4:00pm	Plant Sales, Swaps and Pathogens; Preventing the Spread of Plant Pests; Ann Gibbs Hosta and Hemerocalis diseases

GCFM Spring Convention 2011

SPRING CONVENTION 2011 CONTINUED

5:00-6:00pm	GCFM President's Reception with Rebecca L. Linney Harbor View Room, Alford Center
6:30-9:00pm	Annual Banquet , Awards and Entertainment
Thursday, June 23, 2011	
6:30 - 9:30am	Breakfast
7:30am	Self-guided tours of Historic Castine Bird Walk in Witherle Woods
7:30am	Breakfast Focus Groups Breakfast Focus Groups: all are invited to contribute Putting Together Great Programs and Yearbooks; Getting Started on a Standard Flower Show; Sharing What's New and Promising in Your Garden; Ideas for Youth Activity Programs
8:00-9:00am	Registration at MMA in Harold Alford Center
8:00am-12:00pm	Silent Auction and Raffle; Alford Center
9:00am - 12:30pm	Vendor Displays; Alford Center
9:00-11:30am	Castine Farmers Market
8:15-10:30am	GCFM Annual Business Meeting
11:15-11:45am	Installation of GCFM President for 2011-2012
12:30pm	Silent Auction and Raffle Results Posted
12:30-2:00pm	Closing Luncheon Awards and/or Speaker
2:00-2:30pm	GCFM Executive Board Meeting w/Kathleen Mary in Holmes Heritage Room
2:00pm	Departures via Blue Star Memorial Highways and Downeast Gardens

IMPORTANT INFORMATION - PLEASE NOTE DEADLINE DATES

Registration fee and payment for all meals must be **postmarked by May 13th, 2011**. A late fee of \$15 will be added to registration after that date and **postmarked before May 27th, 2011**. Please make check payable to GCFM Convention 2010 and mail to Shirley Pierce, Registrar, PO Box 424, Orland, ME 04472. **No phone or email convention reservations will be accepted. No refunds after May 13th, 2011.**

Lodging is available at MMA and a number of lovely inns in the area and is separate from conference registration. Over 200 dormitory double rooms w/ twin beds and 20 very simple single and double rooms are available at MMA. Dormitory spaces are \$35/night w/ shared bath. MMA single and double rooms w/ private bath are \$75 and \$85/night. **Room reservations for MMA ONLY will be taken by Cindi Kimball 469-0077, email, ackimball1995@msn.com. All other accommodations must be directed to the property where you'll be staying.**

Questions: Alvion Kimball, Convention Chairman ackimball1995@msn.com
PO Box 306, Orland, ME 04472 or 207-469-1144

NOTE: (Out of Country 3/25-4/2)

GCFM 80th Annual Convention



"HONORING OUR PAST; SUSTAINING OUR FUTURE"

June 21-23, 2011

Maine Maritime Academy, Castine, Maine
Agenda & Registration Form

Name _____ Telephone # _____

Email Address: _____

Address: _____

City/State/zip _____

Garden Club _____ District _____

GCFM State Life ____ NGC ____ Board Member ____ Elected Officer ____

Appointed Officer ____ Chairman ____ Past President ____ Delegate ____

Club President ____

Tuesday, June 21, 2011

- 11:30-5:00 Registration at Harold Alfond Center
- 12:00-4:00 Garden Tour of Castine-Castine Garden Club \$5.00 _____
- 1:00-3:00 Flower and Garden Photographer's Workshop
- Check to attend _____
- 6:30-8:45 Scholarship and Life Member Dinner \$27.00 _____
- Choose one:
Chicken Marsala ____ Broiled Haddock ____
Special diet upon request _____ (specify)

Wednesday, June 22, 2011

- 6:30-9:30 Tasty Breakfast at MMA \$9.00 _____
- 7:30 Breakfast Focus Groups: Check one;
Landscape Design ____ Membership ____
Native/Invasive Species ____
- 7:30 Bird walk in Witherle Woods w/ Margot Haertel _____
- 8:00-6:00 Registration at Harold Alfond Center, MMA
- 10:00-11:00 Keynote Speaker: Cindy Brockway; A Future For The Past,
Understanding Our Landscape Heritage.
- 11:15-12:15 The Greenhouse Project: Affordable
efficient and sustainable year -round growing,
Tom Adamo and Tony Ferrara, Check to attend _____
- 12:15 Luncheon Buffet in Cafeteria \$12.00 _____
Or Box Lunch: Turkey ____ Hummus ____ \$12.00 _____

GCFM 80th Annual Convention

80TH ANNUAL CONVENTION REGISTRATION *CONTINUED*

12:30-4:30	Mini Tours Depart Coleman/Damroche Gardens & Brooklin Brooksville green houses and gardens.	Check to attend _____
	Boat Tours of Penobscot Bay (limited numbers) May be separate charge	Check to attend _____
	Walking Tour of Witherle Woods	Check to attend _____
	Web Site and Newsletter	Check to attend _____
1:30-4:30	Ikebana Demonstration & Workshop Sandra Blake Leonard	Check to attend _____
2:30-4:00	Identifying Invasive vs Native Species Ann Gibbs	Check to attend _____
5:00 - 6:00	GCFM President's Reception with Rebecca L. Linney Harbor View Room, Alford Center	Check to attend _____
6:30-9:00	Annual Banquet and Awards Choose one: Pork Tenderloin _____ London Broil _____ Special diet upon request _____(specify)	\$30.00 _____

Thursday, June 23, 2011

6:30-9:00	Delicious Breakfast at MMA	\$9.00 _____
7:30	Breakfast Focus Groups; Check one: Putting Together Great Programs & Yearbooks _____, Getting Started on a Standard Flower Show____, Sharing What's New and Promising in Your Garden____, Ideas for Youth Activity Programs_____	
7:30	Guided tour of Castine, Castine Historical Society	Check to attend _____
8:00-12:00	Registration at Harold Alford Center MMA	
9:00-11:30	Castine Farmer's Market at the Common	
8:15-10:30	GCFM Annual Business Meeting	
10:45-11:15	Greetings from Shirley Nicolai, President, NGC, Inc.	
11:15-11:45	Installation of GCFM President for 2011-2013	
12:30	Silent Auction and Raffle Results Posted	
12:30-2:00	Closing Luncheon Buffet style - Special diet upon request _____(specify)	\$17.00 _____
2:00-2:30	GCFM Executive Board Meeting in Holmes Heritage Room	
2:00	Departures via Blue Star Memorial Highways to view Downeast Gardens and Landscapes and Visit DownEast Garden Centers and Suppliers.	

Registration fee:

Members \$30 Non-Members \$35 Late Registration \$45 Fee \$ _____

TOTAL Amount of Registration Enclosed \$ _____

CONVENTION PRESENTORS



Lucinda A Brockway is principal and owner of Past Designs, a landscape preservation and design firm in Kennebunk, Maine. An award-winning landscape designer and preservationist, Brockway serves a national clientele, including such well-known projects as the Robert Teller Crane, jr. Reservation (Castle Hill, Ipswich MA), Hamilton House (South Berwick ME), Fort Ticonderoga's Jardin du Roi (Ticonderoga NY), Newport's Bellevue Avenue estates, the Battle Green (Lexington MA), and several projects for the National Trust for Historic Preservation from Texas to New England.

Her private residential designs have won recognition throughout the country. She specializes in designing period-inspired landscapes and gardens featuring both historic and indigenous plants. Her private work has included woodland and wildflower gardens in New Hampshire's northern lakes region, seashore gardens on the Massachusetts's coast, and historically inspired gardens rooted in the Arts and Crafts, Colonial Revival and Edwardian movements.

Her work has been featured in *Old House Journal*, *Victoria Magazine*, *Colonial Homes*, *Ninetieth Century* and *Accent* as well as innumerable professional and trade publication. She is an instructor for the National Preservation Institute, offering courses in landscape preservation from Maine to Hawaii. Her work has been recognized by Garden Club of America, the American Society of Landscape Architects, the Preservation League of New York State, the State of New Jersey, the Massachusetts Historic Commission and others. She is the author of two books, *A favorite Place of Resort for Strangers* (Fort Ticonderoga 2001), and *Gardens of the New Republic* (May 2004)

Shirley Nicolai grew up in a coastal town south of Boston, Massachusetts. She graduated from Bates College in Lewiston, Maine, with a major in psychology. Through summer graduate courses in education, she became a certified elementary school teacher and taught grades three, four and five. She vividly remembers the year when she had a class of 27 boys and only 3 girls.



CONVENTION PRESENTORS

With her husband Frank traveling for business reasons, Shirley opted to be a stay-at-home mom for their two children, Keith and Karen. A keen interest in horticulture and landscape design led to membership in a garden club. Within a few years, Shirley served as club President and began taking advantage of National Garden Clubs' Educational Study Programs. With master status in Landscape Design, Gardening Study, Environmental Studies and Flower Show School, she is a Five Star Member. Special satisfaction over the years has come from serving as President of her state's Landscape Design Council, chairing Standard Flower Shows, growing her own plant material for designs, judging county beautification contests and forming a new garden club with evening meetings.

Involvement at the national level began in 1997 when Shirley was elected President of the National Capital Area Garden Clubs, Inc. With a theme of "Come Grow with Us", her administration's project was a curriculum guide for teachers to use with students visiting the U.S. National Arboretum's Herb Garden. From 1999-2001, she served on the NGC board as Landscape Design Vice-Chairman. From 2001-2003, She served as Regional Director, Central Atlantic Region (DE, MD, NCA, NJ, NY, OH and PA). In 2003, she was elected Fourth Vice President of National Garden Clubs. In this position she chaired a \$100,000 NGC/Principal Financial Group Historic Gardens grant program, which both showcased the extraordinary service our clubs provide to our communities and gave her insights into the diversity of our membership. Since then, assignments have included Organization Study, Award of Excellence, Finance, Membership and Liaison to State Presidents and Regional Directors.

Recent non-garden club responsibilities include serving on the boards of the Friends of the National Arboretum (FONA) and the Alice Ferguson Foundation. Shirley still serves on the board of the American Horticultural Society and is a member of the WAFA USA (World Association of Flower Arrangers) Management Committee. Avocations include a three acre garden, bridge, too many cats and occasional golf.

With a theme of *NGC: Proudly Serving Our Members and Communities*, she looks forward to greeting garden club members from across the country and giving them praise for enriching the lives of others. Coming to Maine is truly special, as that is where she and her husband first met.

Tom Adamo and Tony Ferrara The Greenhouse Project evolved out of a Blue Hill peninsula conference and community initiative entitled Community SELF Reliance (Shelter, Energy, Livelihood, Food). Its objective was to promote self-reliance through year-round food production making affordable and efficient cold frames and polycarbonate greenhouses available to local residents along with

CONVENTION PRESENTORS

design and technical assistance to adapt them to individual needs. To date, Adamo and Ferrara have assisted more than 50 families in the design and construction of greenhouses, and they have assisted with the building of several school greenhouses in both Hancock and Washington counties. This project is now expanding beyond the Downeast area and becoming a model for similar projects in other states and countries.

Both Tom Adamo and Tony Ferrara are retired professors in the Social Sciences disciplines as well as avid gardeners with long histories of community-building volunteer activities.

Sandra Blake Leonard

Sandra is a nationally accredited show judge, a member of Judges Council and the winner of numerous flower show awards. Her interest and expertise in Ikebana originated during a period when she was living in Japan, and it has since had a strong influence on her approach to floral design.

Lynn Karlin

Lynn is a professional photographer whose work is widely published in horticultural magazines and books worldwide. Her latest book, *Garden Maine Style, Act II*, published by Downeast Books, received a 2009 Garden Writer's Association award. Lynn has a great depth of knowledge of cameras and can pick up any person's camera, and show the owner how to use it in a very short amount of time to get the best picture possible.

Visit our Booth at the Convention

Two Crazy Women

Creators & Designers
of programs to encourage, excite and educate youth

info@thetwocrazywomen.com
www.thetwocrazywomen.com

(207) 619-4543

2011 CONVENTION

2011 Convention Committee have shared some lodging options with us. Below is a list of options for you to check out. See everyone in Castine in June 2011.

LOCATION	PHONE	NUMBER OF	PRICE RANGE
CASTINE www.mainemaritime.edu	1-800-464-6565	145	\$48-\$86
CASTINE www.casstineinn.com	326-4365	19	\$95-260
CASTINE www.pentagoet.com	326-8616	16	\$125-285
CASTINE www.manor-inn.com	326-4861	13	\$110-290
CASTINE www.castinecottages.com	326-8003	6 - 2 BEDROOM	Call for info for convention
PENOBSCOT www.brassfoxbb@netscape.net	326-0575	3	\$105-130
ORLAND www.alamoosooklakesideinn.com	469-6393	6	\$115
ORLAND www.orlandhousbb.com	469-1144	3 PLUS COTTAGE BY WEEK	\$125/COTTAGE \$1000
BLUE HILL www.bluehillin.com	374-2844	11 AND 2W/ KITCHINETTES	\$155-295
BLUE HILL Under Construction	374-5126	14	\$85-115
BUCKSPORT www.williamspondlodge.com	460-6064	1	TBD
BUCKSPORT www.bucksportmotorinn.com	469-3111	23	\$75-85
BUCKSPORT www.fortknoxinnmaine.com	469-3113	40 - 2W/ KITCHINETTES	\$120-180

"Private Gardens of the Kennebunks" Garden Tour

Sixteenth Annual Garden Tour

To benefit the **Child Abuse Prevention Council** Of York County

July 16, 2011

10 am to 4 pm this one day only

Advance tickets are \$15 per person Before July 1st, \$20 thereafter

FMI/to purchase tickets in advance contact:
Child Abuse Prevention Council of York County
 (207) 985-5975; events@kidsfreetogrow.org
www.kidsfreetogrow.org





Spectacular
Gardens
Year-Round



- Acres of ornamental gardens
- Waterfront and woodland trails
- Year-round programs and events for all ages
- Wondrous Children's and Sensory Gardens



May 7:
Tea & Tulips
Spring Tea ▼



May 14:
Starting Your Own
Cutting Garden ▼



May 19:
The American
Chestnut Story ▼



May 21-22:
Not-Your-Garden-
Variety Plant Sale ▼



June 4:
Making Hypertufa
Troughs ▼



June 23:
Roses! A Visit to
North Creek Farm ▼



**Reserve now for
2011 Gardens
Getaways:**

British Columbia
Ireland
New York City

Open 9-5 daily, year-round.
Shop and café open seasonally.

Admission fees; members free.

Barbers Island Road
Boothbay, ME 04537

(207) 633-4333



ZONE

www.MaineGardens.org

facebook