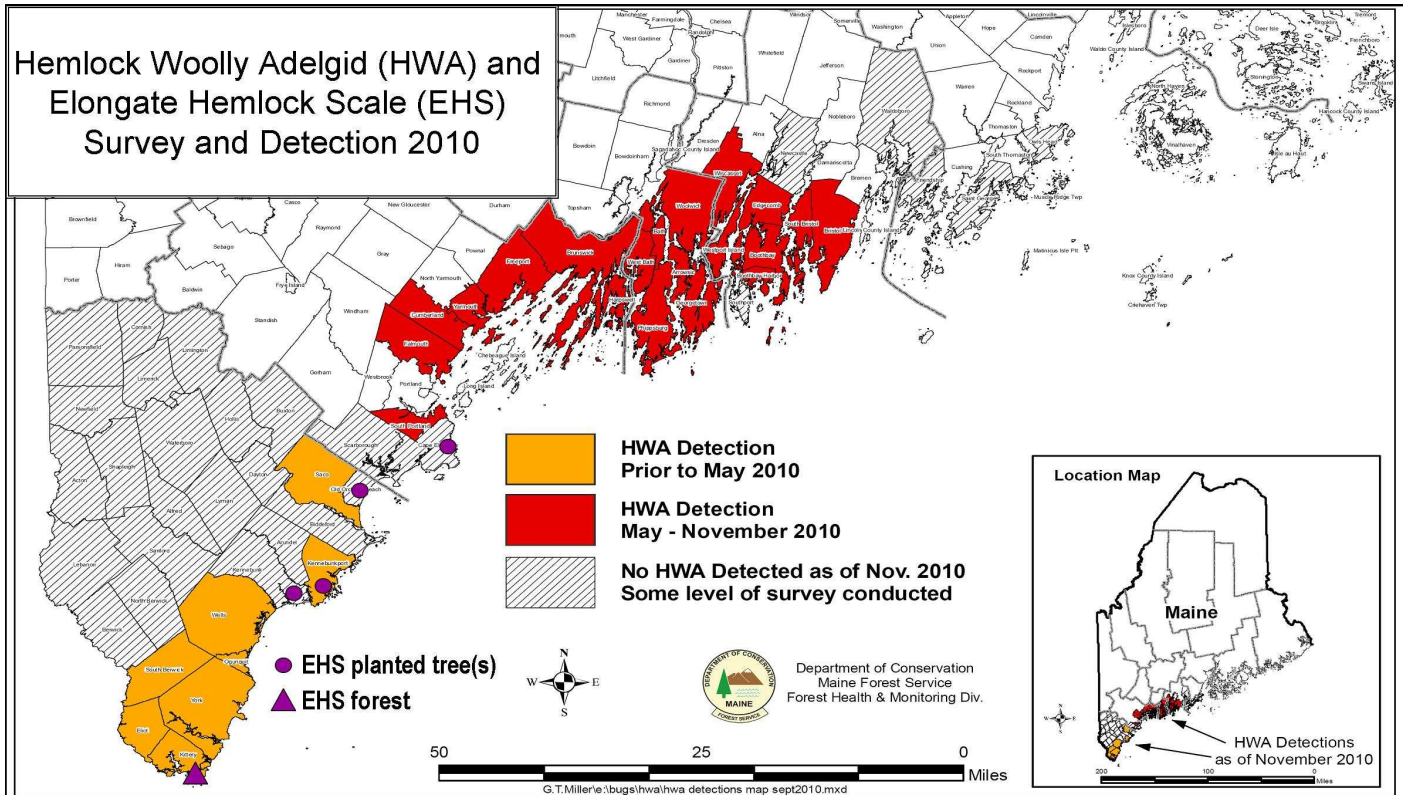




**Hemlock Woolly Adelgid and Elongate Hemlock Scale:  
Known Distribution in Maine 2010**

[www.maineforestservice.gov](http://www.maineforestservice.gov) • [forestinfo@maine.gov](mailto:forestinfo@maine.gov) • (207) 287-2431 • 1-800-367-0223 (in Maine)



**Known Distribution of Hemlock Woolly Adelgid in Maine**

Hemlock woolly adelgid, a pest of hemlocks, can be very hard to see until its population explodes. However early detection is possible with periodic monitoring. As of February 2011 hemlock woolly adelgid has been found in the following Maine towns:

**Cumberland County:** Brunswick, Cumberland, Falmouth, Freeport, Great Diamond Island (part of Portland), Harpswell, South Portland, Yarmouth

**Lincoln County:** Boothbay, Boothbay Harbor, Bristol, Edgecomb, South Bristol, Westport Island, Wiscasset

**Sagadahoc County:** Arrowsic, Bath, Georgetown, Phippsburg, West Bath, Woolwich

**York County:** Eliot, Kennebunkport, Kittery, Ogunquit, Saco, South Berwick, Wells, York

*For more information visit: [www.maineforestservice.gov/HWAOverview.htm](http://www.maineforestservice.gov/HWAOverview.htm).*

**Known Occurrences of Elongate Hemlock Scale in Maine**

Elongate hemlock scale, a pest of hemlocks, firs and other conifers, is equally difficult to detect. To date it has been found on forest hemlocks in **Kittery (York Co.)** and on planted hemlocks in the **York County** towns of **Kennebunk, Kennebunkport and Old Orchard Beach** and the **Cumberland County** town of **Cape Elizabeth**.

*For more information visit: [www.maineforestservice.gov/EH\\_Scale.htm](http://www.maineforestservice.gov/EH_Scale.htm)*